

Rivers, Trails, and Conservation Assistance (RTCA)

Large Landscape Conservation Action through Locally Led Planning and Partnerships

National Park Service
U.S. Department of the Interior



www.nps.gov/rtca

Poster ID: P06

Kimberly Shafer, National Park Service RTCA

Scaling Up

The National Park Service RTCA program is currently providing assistance to partners in 34 LLC projects across the country. These efforts include regional and statewide strategic conservation planning; green infrastructure planning, wildlife corridor protection, protection and restoration of natural lands and waters; recreation planning across networks of public lands; and implementation of local projects that further large landscape conservation goals.

The projects focus on **collaborative** efforts to protect and steward resources and holistic ecosystem processes in support of a range of ecological, economic, historical, cultural and recreational goals. They are **multi-jurisdictional**, involving the participation of many governing entities; **multi-objective**, conserving priority lands to meet a range of needs and goals; and **multi-stakeholder**, requiring partnerships among public and private organizations, and enabling stakeholders to better prioritize actions, expand partnerships, and share services for conservation success.

Conservation Vision, Local Action

Rivers, Trails, and Conservation Assistance program staff work in every state, the District of Columbia and Puerto Rico. RTCA projects lead to tangible on-the-ground success while building capacity to sustain locally based conservation.



Salmon Creek Greenway, Vancouver, WA. Within The Intertwine Alliance's focus area, this 130-acre urban greenway includes bottomlands, wetlands and forested hillsides on both sides of Salmon Creek. It is extensively used by local wildlife, including migratory waterfowl and other birds, deer, coyotes, rabbits, opossums, raccoons and beavers. A 3-mile multi-use trail extends through a portion of the greenway. Photo: Mike Houck

Integrating Community Based Conservation Action with Large Landscape Conservation

(NWLLC Session F65 will focus on three RTCA partnerships)

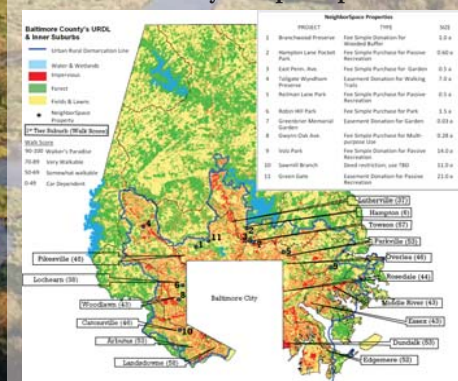


Intertwine: Portland/Vancouver Region

The Regional Conservation Strategy for the Greater Portland-Vancouver Region (RCS) is a product of The Intertwine Alliance—a broad coalition of over 80 public, civic, private, and nonprofit organizations dedicated to building a world-class system of parks, trails, and natural areas. The RCS covers 3,000 square miles along the Columbia River and nine counties, presenting a broad regional view of conservation while highlighting ongoing efforts and potential actions at the local level. It is a starting point for future collaboration, provides a larger context for local efforts and serves as a framework for future strategic conservation actions.

NeighborSpace: Baltimore County/Chesapeake Bay Watershed

NeighborSpace is a nonprofit organization that works with partners to promote more livable communities inside Baltimore County's growth line by acquiring land for a variety of open space uses. Their strategic conservation plan focuses on responsible stewardship, sustainable growth and strategic acquisition guided by environmental, social, and economic objectives.



Conservation and restoration of these lands contribute to improving the health of the Chesapeake Bay Watershed.

SEMIWILD: Detroit/Southeast Michigan

SEMIWILD is a collaboration of nine land trusts in the Detroit metropolitan area focused on protecting and preserving the treasured open spaces, green corridors, and natural areas found throughout Southeast Michigan. A synthesis of numerous regional green infrastructure plans, priority conservation lands assessments, critical habitat plans and watershed plans have identified the high priority conservation lands and corridors in the region. SEMIWILD land trusts are joining forces and working beyond their boundaries to systematically protect these remaining wild places in Southeast Michigan.



Building Community, Inspiring Action

Landscapes and communities are unique. RTCA plays a role in assisting conservation partners to build capacity for community engagement, resource assessment and strategic conservation planning to address the long-term needs of people and place.

PEOPLE PASSION
COMMUNITY ENGAGEMENT
Strategic Conservation Planning
RTCA
Intertwine
SEMI WILD
NeighborSpace of Baltimore County, Inc.

Special Thanks to:
Barbara Hopkins, NeighborSpace
Jonathan James, SEMI WILD
Mike Wetter, The Intertwine Alliance
Wink Hastings, NPS RTCA, MD
Barbara Nelson-Jamerson, NPS RTCA, MI
Dan Miller, NPS RTCA, WA
Stephan Nofield, Deputy Chief, NPS Conservation and Outdoor Recreation Office
Mike Houck, Photographer